



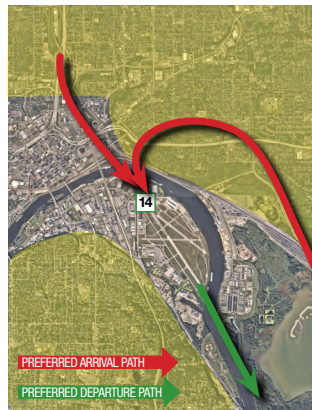
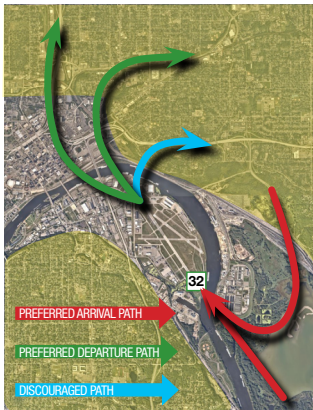
St. Paul Downtown Airport (STP) Fly Neighborly Guide

1. TAKEOFF AND APPROACH

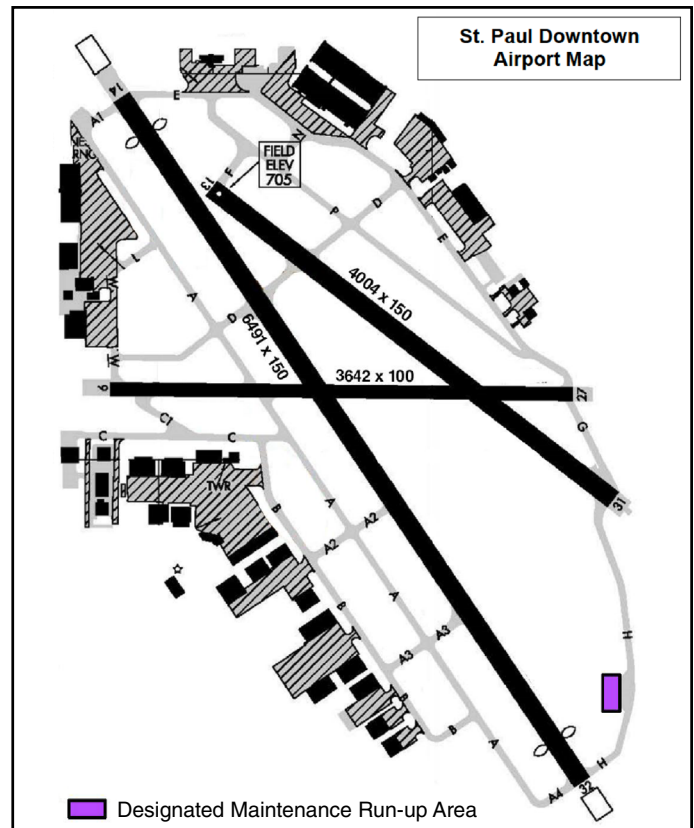
- Runway 14: calm wind runway.
- Runway 27: use right traffic.
- Aircraft follow PAPI glide slope until a lower altitude is necessary for a safe landing.
- Use guidance from FAA, NBAA, AOPA below:
 - [FAA AC 90-66C Non-Towered Airport Flight Operations](#)
 - [FAA AC 91-36D - Visual Flight Rules \(VFR\) Flight Near Noise-Sensitive Areas](#)
 - [NBAA Noise Abatement Program](#)
 - [AOPA Noise Awareness Steps](#)
- Climb to 700' agl before turning, follow paths as depicted for arrival/departure.

2. TRAFFIC PATTERN

- Fly aircraft at traffic pattern altitude in accordance with Federal Aviation Regulations.
- Avoid multiple training events by turbine-powered aircraft.
- Keep traffic pattern legs as short as practical without risking safety.
- Use the full length of runway for arrivals/departures: avoid stop and go operations; and avoid intersection takeoffs.
- Avoid repetitive activity over residences.
- When departing the traffic pattern, choose a path that avoids overflying residential areas when practical.



Residential areas surround STP (see yellow shading).



3. MAINTENANCE RUN-UPS

- Use designated area to conduct all engine tests and maintenance run-ups in excess of 5-minutes. Pre-departure Run-ups may be conducted in other areas.
- Engine tests and maintenance run-ups during nighttime hours prohibited.

4. HELICOPTER TRAINING

- Use designated helicopter training areas (ask ATC).
- Avoid helicopter training in the traffic pattern 2200-0700.
- Avoid hovering for extended durations near residential areas.
- Avoid repetitive activity over the same neighborhoods.

5. NIGHTTIME OPERATIONS (2200-0700)

- Avoid operating aircraft during nighttime hours.
- Avoid nighttime currency operations and flight training in the traffic pattern after 2400 local time.
- Avoid unnecessary low-level flyovers at the airport.

If you have questions, please contact the airport manager at
651-224-4306